

# Mikuni TMS/TMX Series

Mikuni designed the TMX Series particularly for 2-stroke engines in motocross, off-road and ATV racing applications. The TMX features a radial flat slide design, lightweight and compact body. Suggested applications are TMX35 for 125cc race engines and TMX38 for all Open Class machines.

## Standard Jetting Spec

Description	Main Jet	Pilot Jet	Jet Needle	Throttle Valve
TMX35-1	4/042 350	VM22/210 20	6EN11-53	999-832-014 6.0
TMX38-18 (47mm O.D.)	4/042 370	VM22/210 20	6EJ12-55	999-832-014 3.5
TMX38-27 (44mm O.D.)	4/042 370	VM22/210 20	6EJ12-55	999-832-014 3.5
TMX38-2	4/042 310	N224.103 20	6BEG18-68-3	832-42016 5.0
TMX38-5	4/042 640	N224.103 30	6BEG2-60-3	832-42016 5.0

001-076



## TMX Carburetors

Mikuni No.	Standard Jetting	Special Set
TMX35-1	001-034	001-182
TMX38-18	001-076	001-189
TMX38-27	001-077	001-184
TMX38-2	001-074	---
TMX38-5	001-075	---

001-075



## Needle Valve Assemblies

Order No.	Mikuni No.	Description
002-466	786-36004	3.5 gravity flow (std)
002-464	786-36004A	1.8 fuel pump

## Throttle Valves

Order No.	Mikuni No.	Cutaway
002-472	999-832-014	3.0
002-473		3.5
002-476		4.0
002-474		5.0
002-475		6.0



## TMX Throttle Valve (5.0) for Stock TMX38

Order No.	Mikuni No.
007-415	832-41018 5.0

Application: Honda CR250R 01-03 O.E.M Carb



## TMX Carb-Air Boot Adapter-TMX/001

An option available for the TMX carburetors, is this airboot adapter, required for some applications when replacing a stock O.E.M. carb with an aftermarket TMX Carb.

Order No.	Mikuni No.	Description
005-080	TMX/006	TMS Carb Airboot Adapter



## TMS Throttle Valves

Order No.	Description	Engine	Inlet Hole	Outlet Hole
007-410	999-832-017 "1G"	250cc	3.0mm	2.0mm
007-411	999-832-017 "1H"	125cc	2.0mm	1.4mm

WEB: [WWW.SUDCO.COM](http://WWW.SUDCO.COM)

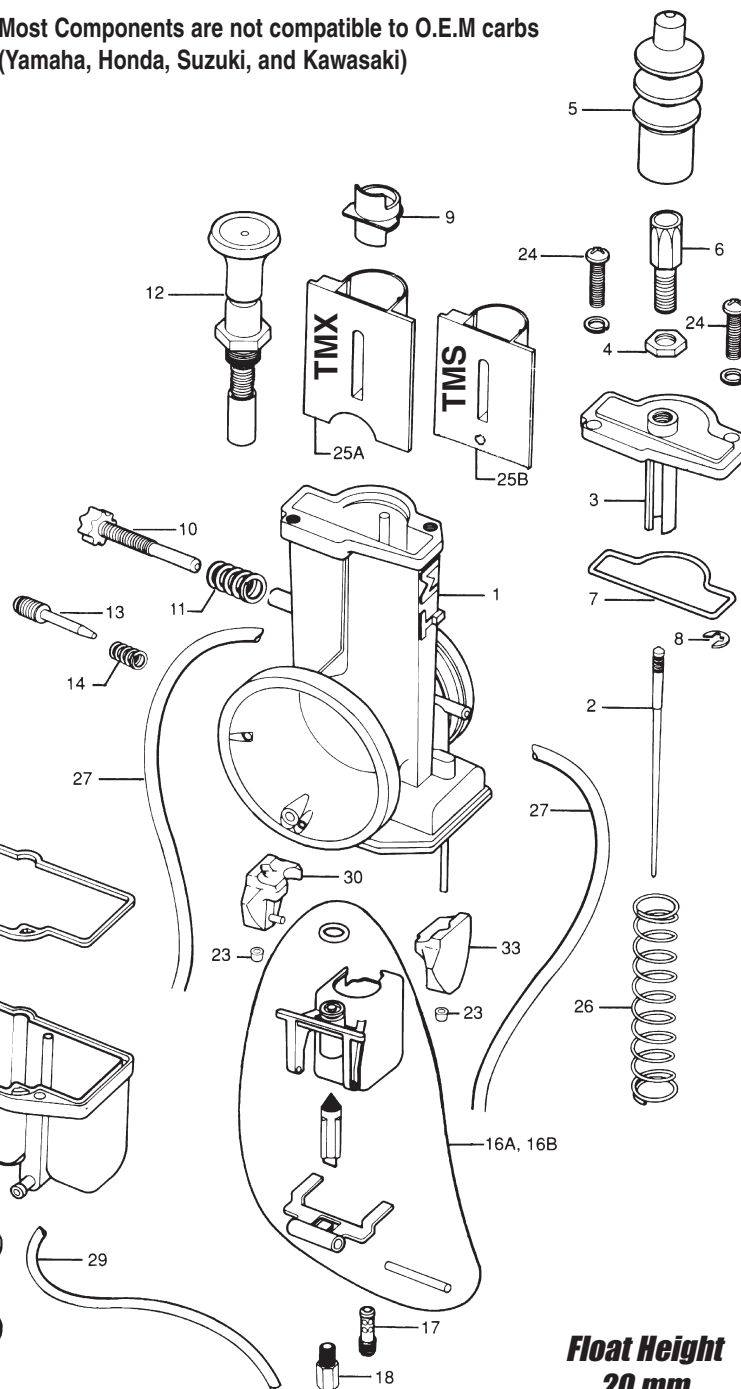
E-MAIL: [SUDCO@SUDCO.COM](mailto:SUDCO@SUDCO.COM)

# Mikuni TMS/TMX Parts

## TMX/TMS Series Carburetors TMX35-1, TMX38-18, TMX38-27, & TMS38

No.	Order No.	Mikuni Part #	Description
1.		TM38SS11	Mixing Body Carb
2.	Pg. 44	J8	Jet Needle
3.	002-451	776-19014	Cover, Carb Top
4.	002-065	B30/247	Lock Nut, Adjuster
5.	002-452	VM34/282	Cap, Rubber
6.	002-453	VM30/77	Adjuster Cable
7.	002-454	616-93009	O-Ring, Top Cover
8.	002-455	BS32/126	E-Ring, Needle Clip
9.	002-456	TM38/54	Ring, Retaining
10.	002-457	603-25008	Adjuster, Idle Stop
11.	002-655	N110209	Spring, Idle Adjust
12.	002-458	TM38/57	Plunger, Starter Ass'y
13.	002-459	603-36002	Screw, Air Adjuster
14.	002-863	VM15/112	Spring, Air Screw
15.	002-461	TM38/48	Chamber, Float Bowl
16A.	002-466	786-36004 (3.5)	Valve Seat, Needle Ass'y
16B.	002-464	786-36004-A (1.8)	Valve Seat, Needle Ass'y
17.	Pg. 64	VM22/210	Pilot Jet
18.	Pg. 63	4/042	Main Jet
23.	002-718	VM26/42	Cap, Float Retainer
24.	002-748	CW2-0412	Screw, Top Cover
25A.	Pg. 44	999-832-014	Throttle Valve TMX
25B.	Pg. 44	999-832-017	Throttle Valve TMS
26.	002-477	730-13019	Spring, Throttle Valve
27.	002-478	888-24011	Hose, Vent
28.	002-479	CW2-0308	Screw, Float Bowl
29.	002-480	888-23022	Hose, Overflow
30.	002-482	859-52021	Float, Left Side
31.	002-602	BN042/64	O-Ring, Drain Plug
32.	002-483	TM38/44	Drain Plug
33.	002-481	859-52020	Float, Right Side
34.	002-484	TM38/52	Gasket, Float Bowl

Most Components are not compatible to O.E.M carbs (Yamaha, Honda, Suzuki, and Kawasaki)

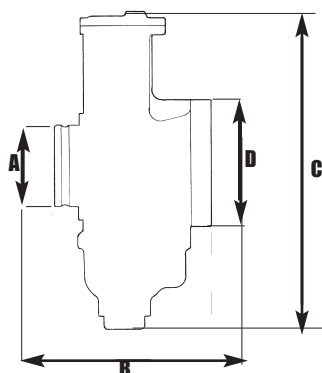


### TMS/ TMX Rebuild Kit

Order No.

007-950	Carb Rebuild Kit w/ 3.5 N.V.
007-951	Carb Rebuild Kit w/ 1.8 N.V.

### TMX/TMS Series Carburetor Dimensions (mm)



MODEL	TMX35-1	TMX38-27	TMS38-77	TMX38-18	TMS38-78
A	40	44	44	47	47
B	76	76	76	76	76
C	164	164	164	164	164
D	62	62	62	62	62
TOTAL WIDTH	76	76	76	76	76

**Float Height  
20 mm**