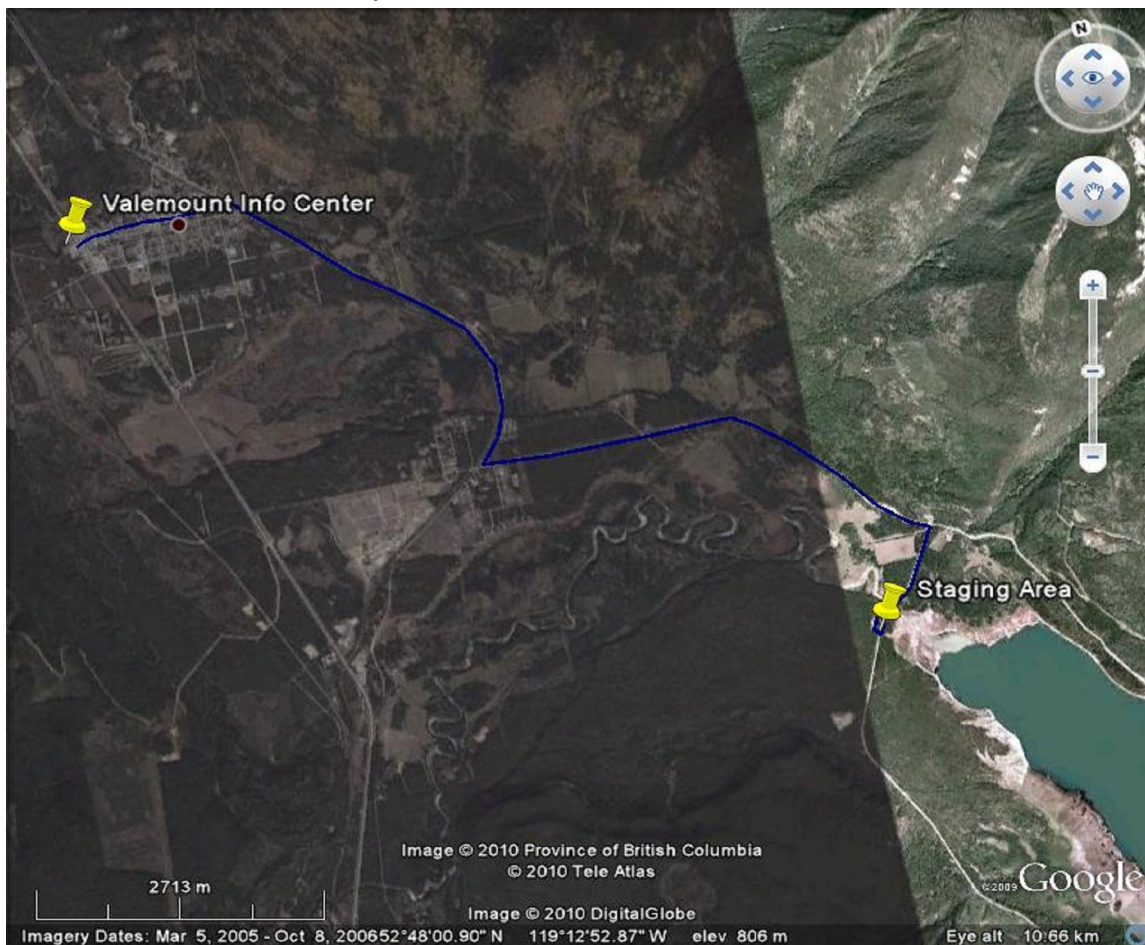




Directions to the Staging Area for the Spring Festival ATV Ride from the Visitor Information Center on Hwy 5



Beginning at the Information Center:

- Follow 5th avenue through the town site and cross the railway tracks
- Turn right onto Main St and follow for 4km, you will soon see signs for Kinbasket Lake on your left.
- Turn left onto the Canoe Fsr at these signs and follow this road for 5km.
- You will then see a junction for the East and West Side Roads.
- Turn Right and follow this road for 1.5km. You will cross the Canoe River and from this bridge, you will see the staging area down on your right. Please follow the signage to get you into the area.